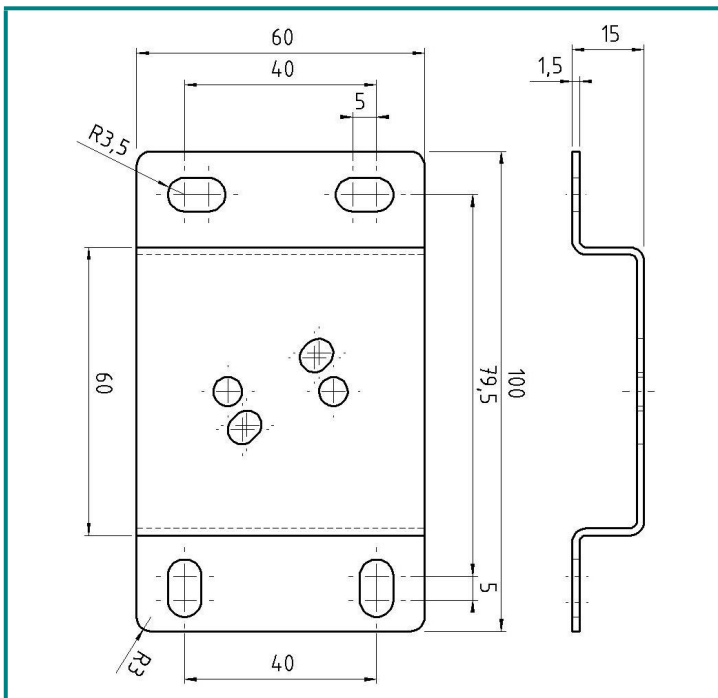
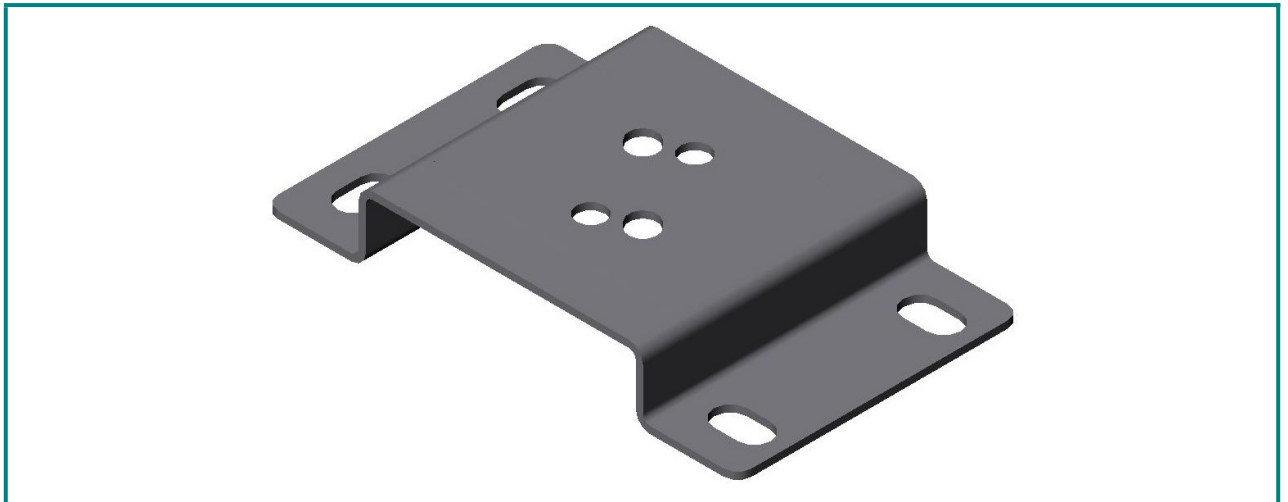


Wall mounting bracket in stainless steel, electrolytically polished, for shut-off valve HP500, regulators HD400, HD250, HP300, HP310 and FR1



Wall mounting bracket in stainless steel and electrolytically polished and assures the secure mounting of the shut-off valve HP500 and the regulators HD400, HD250, HP300, HP310 and FR1.

Order-No. 650013

Consists of:

Quantity	Article
1	Bracket

Hornung Quality standard

The company Hornung is certified to **DIN EN ISO 9001 and ISO 14001:2009.**

All single parts are manufactured, assembled and tested in house.

The finished parts are therefore under the criteria of our exact quality control with 100% final control.

Hornung GmbH
Rathenaustraße 55, 63263 Neu-Isenburg

Phone: +49 6102 7883-70
Fax: +49 6102 7883-40

www.hornung.org
info@hornung.org