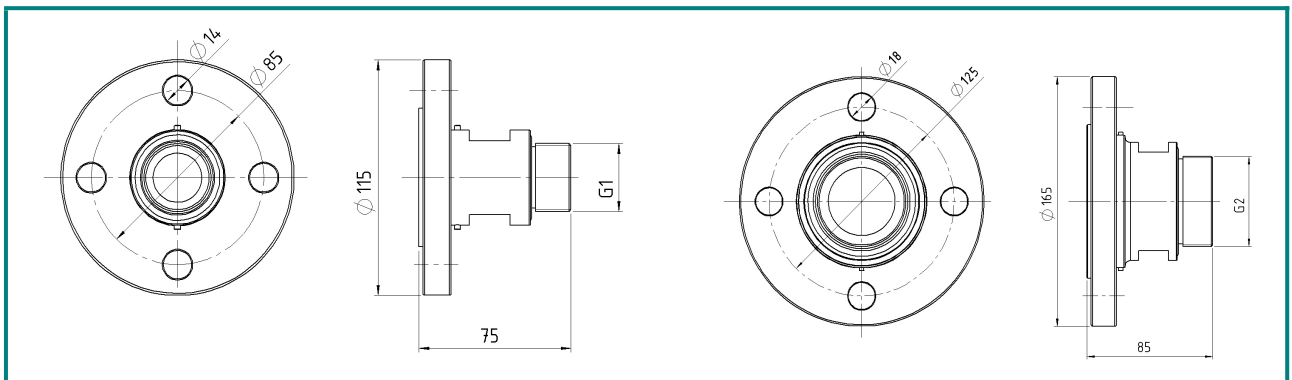
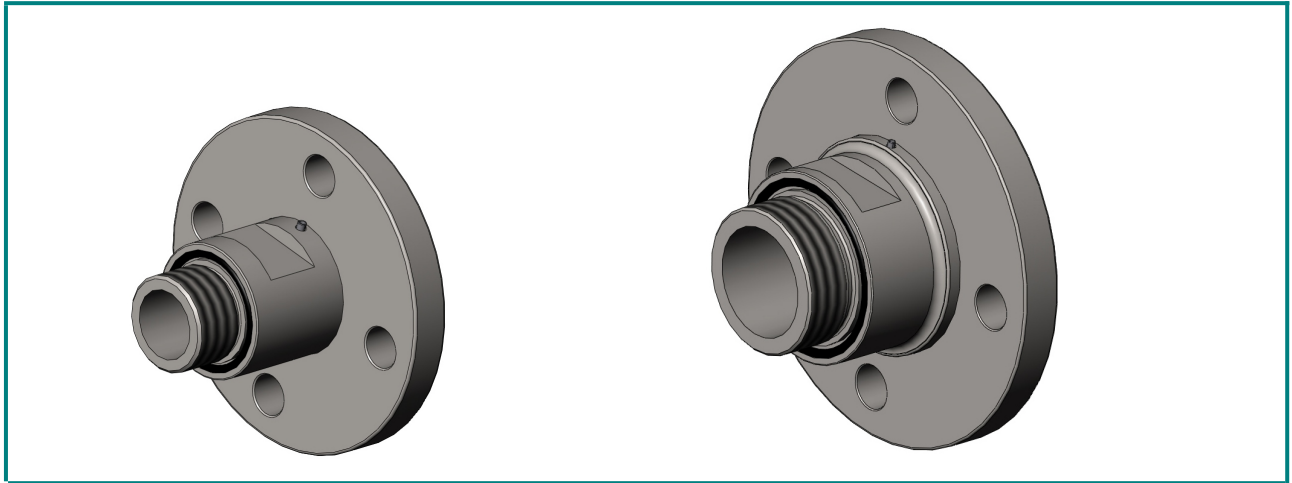


Threaded flange complete (D1/D2)



Threaded flanges enable the connection of our products within the dome-series with your mountings or systems.

You will find connection adaptors with the most common coupling threads in our assortment.

We recommend a grooved steel gasket with PTFE-layers on rust-resistant steel according to the AD 2000-instruction sheet B7.

| Order number | Design | Material | Connection |
|--------------|--|----------------|------------|
| B-3067 | Threaded flange DN25/PN100/Type B1 Seal face EN 1092-1,B1(without welding collars) | Brass (MC) | G1" |
| B-3067/1 | Threaded flange DN25/PN100/Type B1 Seal face EN 1092-1,B1(without welding collars) | St. steel (SS) | G1" |
| B-3066 | Threaded flange DN50/PN100/Type B1 Seal face EN 1092-1,B1(without welding collars) | Brass (MC) | G2" |
| B-3066/1 | Threaded flange DN50/PN100/Type B1 Seal face EN 1092-1,B1(without welding collars) | St. steel (SS) | G2" |

Technical details:

Material: stainless steel
brass

Operating temp.: -20°C to +60°C

Hornung Quality standard

The company Hornung is certified to **ISO 9001:2008 and ISO 14001:2009.**

All single parts are manufactured, assembled and tested in house.

The finished parts are therefore under the criteria of our exact quality control with 100% final control.

Hornung GmbH
Rathenaustraße 55, 63263 Neu-Isenburg

Phone: +49 6102 7883-70
Fax: +49 6102 7883-40

www.hornung.org
info@hornung.org