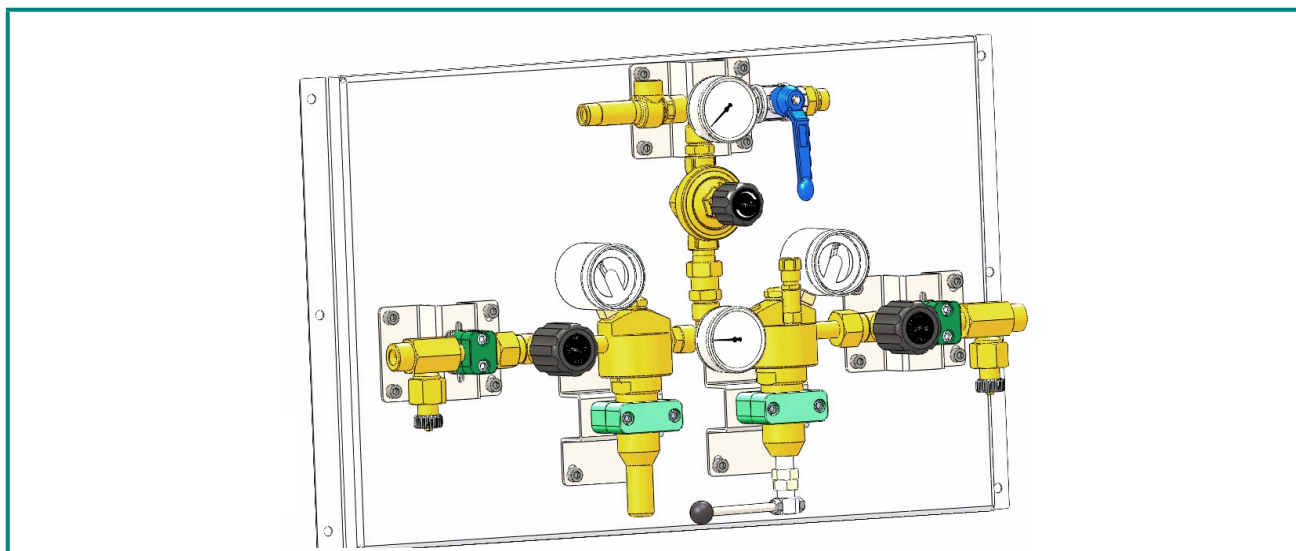


Pressure Controlling Station ZD60/PR7

- 2x1 cylinder (Bundle) single or multi-stage pressure controlling station with a self-acting switch



Description:

The pressure controlling station ZD60/PR7 is a single or dual-stage pressure controlling station with a self-acting switch.

It's main purpose is the ensured withdrawal of gases and gas mixtures from gas cylinders. The self-acting function of a two-stage station is activated as soon as the pressure on the primary stage descends below a preset value.

The pressure reduction is controlled by two integrated pressure control regulators connected by exhausts. This enables an exchange of gas cylinders without an interruption of gas supply.

The station is mounted on brackets and possesses an inlet and an outlet gauge as well as an exhaust and a cut-off valve for the process gas.

Application:

Especially for gases with safety and impermeability requirements, as well as for the assurance of an uninterrupted gas supply overnight and during the weekends. An enhancement of the gas supplying concept is achieved by an optional integration of a gauge and a gas leakage warning device.

Technical specification:

Body: brass

Seat: polyamid

Diaphragm: 1.4301

Max. inlet pressure: 300 bar

Outlet pressure ranges: 2-stage 6-16 bar
single stage 10-30 bar

Operating temp.: 20°C bis +60°C

Gauges safety version
EN 837-1 KL 1,6

Size (WxHxD): 760x450x184

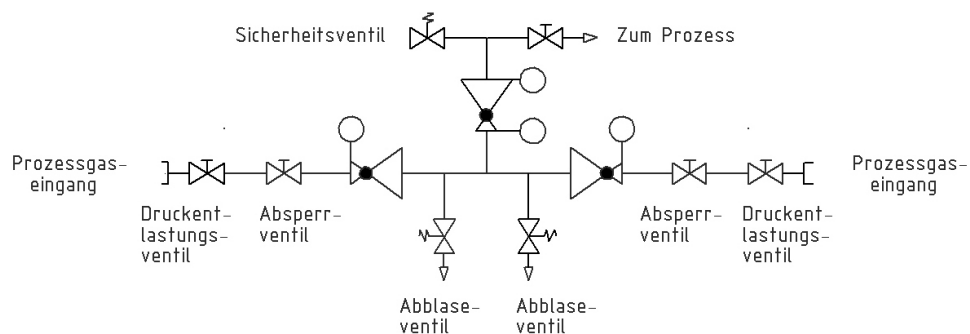
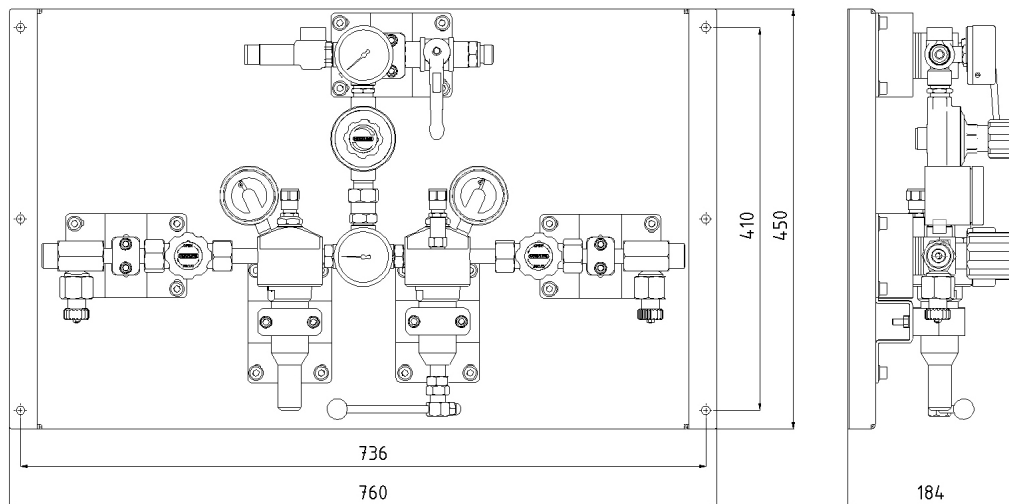
Thread: ES: G 3/4" DIN 477

Hornung Quality standard

The company Hornung is certified to **DIN EN ISO 9001 and ISO 14001:2009.**

All single parts are manufactured, assembled and tested in house.

The finished parts are therefore under the criteria of our exact quality control with 100% final control.



Accessories:

See chapter in the general catalogue

7. Connecting hose 200bar
Connecting hose 300bar
Gauge, Inductive gauge,
Threaded joint, Cylinder mounts and
accessories

The composition can be equipped with a CE
labelled safety valve.

Other design options of the pressure
regulating station on request.

Ordering Information:

Inlet pressure p1:

- 1 = 200 bar
- 2 = 300 bar

Outlet pressure p2:

- 1 = 6 bar
- 2 = 10 bar
- 3 = 16 bar

Stages:

- 1 = single stage
- 2 = dual-stage
- 3 = 30 bar (single stage)

Gauge:

- 1 = standardized gauge
- 2 = inductive gauge

47 -	1	1	2	2	Gas type
Tvøe	p1	p2	Stage	Gauge	Gas tvøe

Accessories:

High pressure manifold: see data sheet "High pressure manifold"

Notice:

See further data sheet: "Cylinder manifold station" and "bundle manifold station"

